



Update on Brahman Bin Heifers

Presented by
Paul Williams

What size difference might we expect?

**Daughter
age at puberty
differences**



?



**Daughter
reproduction**



?

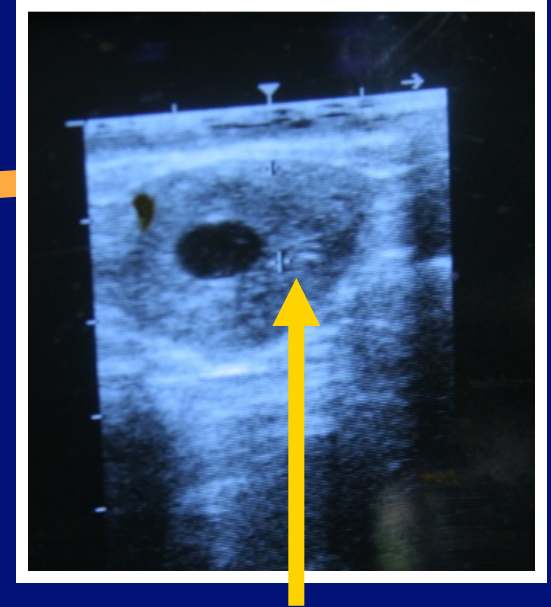
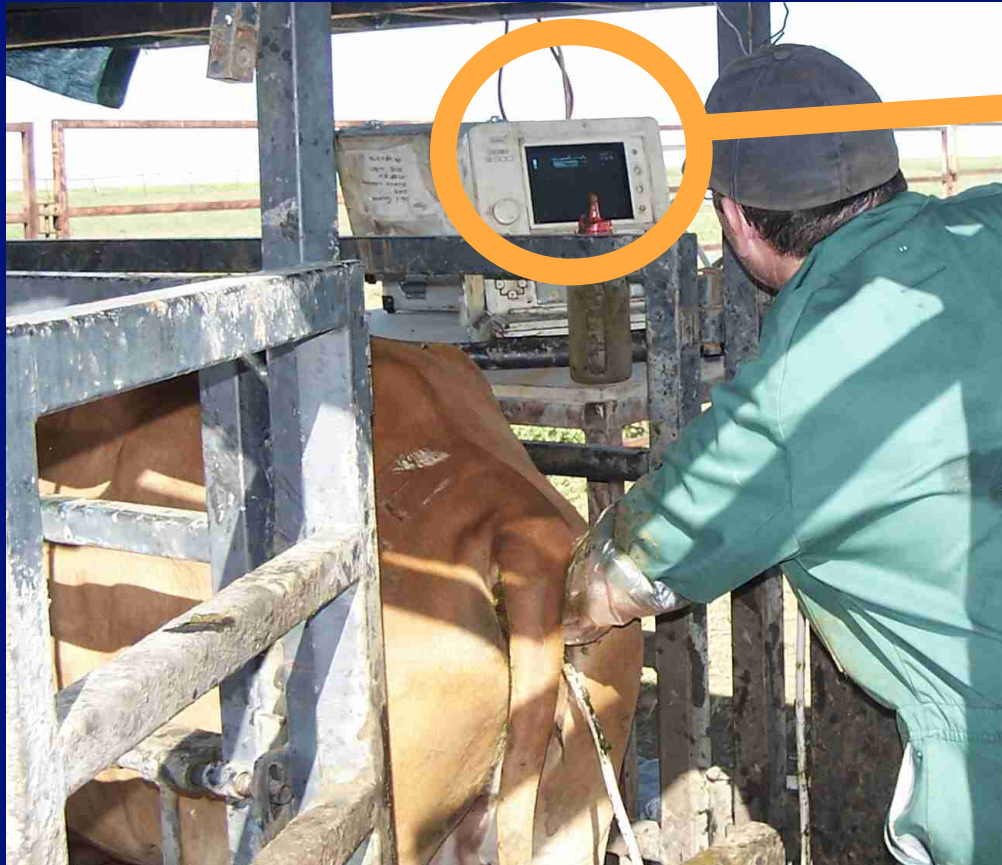


BEEF CRC Project

- **1,100 Brahman cows across 3 locations**
 - recorded weaners to 9 years
 - daughters of 50 Brahman sire (20-25 per sire)
- **full reproductive history (up to 6 breeding seasons)**
 - heifer age at puberty
 - post-calving ovarian scanning
 - follicle size, ovulation, preg test, foetal age
 - mating details: bullin & out dates, mating group
- **complete calving details**
 - DOB, BWT, sex, sire, death codes
 - cow teat and udder scores



Scanning for ovarian activity



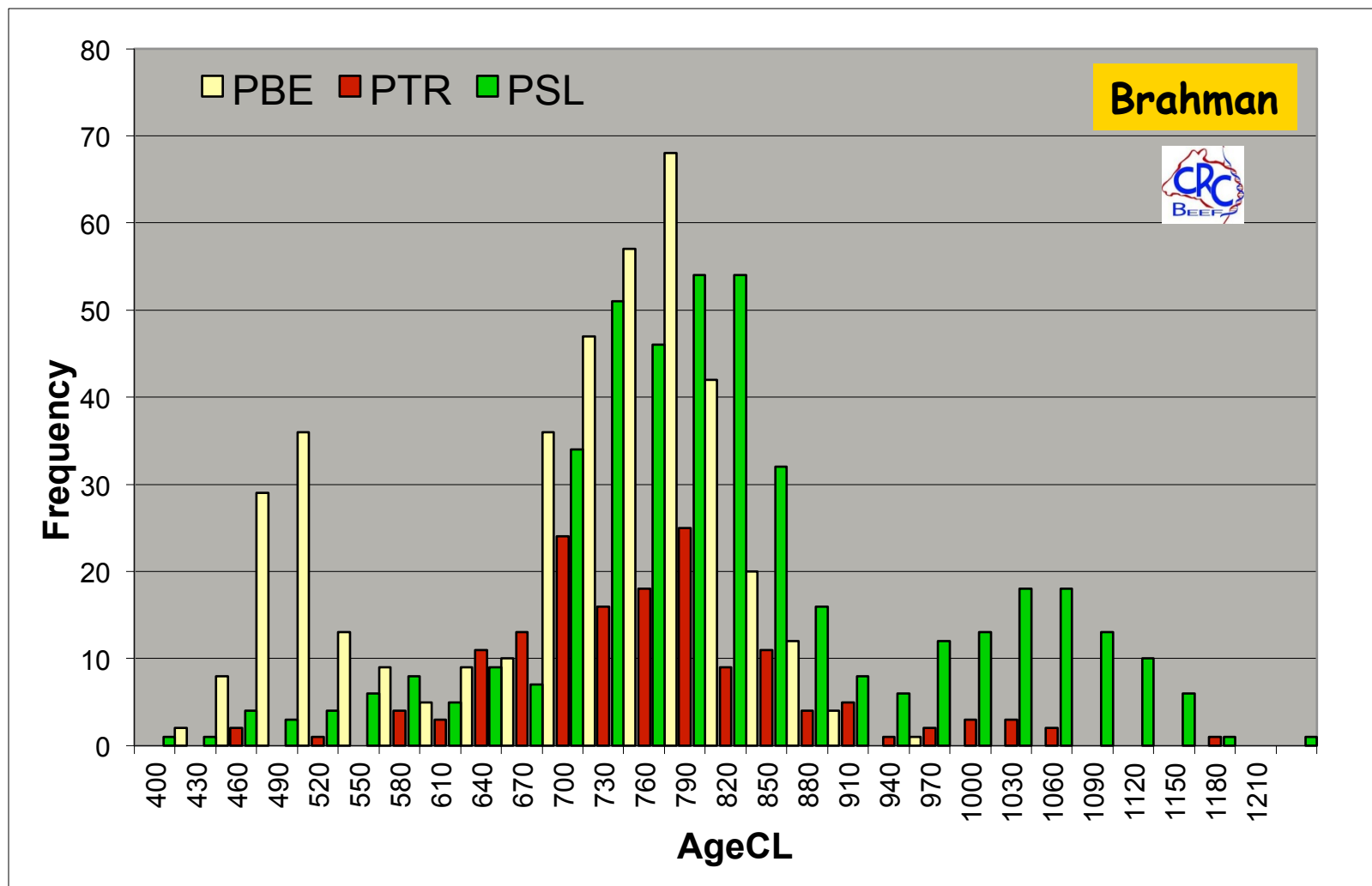
Corpus Luteum (CL)

First observed CL



AGE AT PUBERTY

Distribution of age at puberty



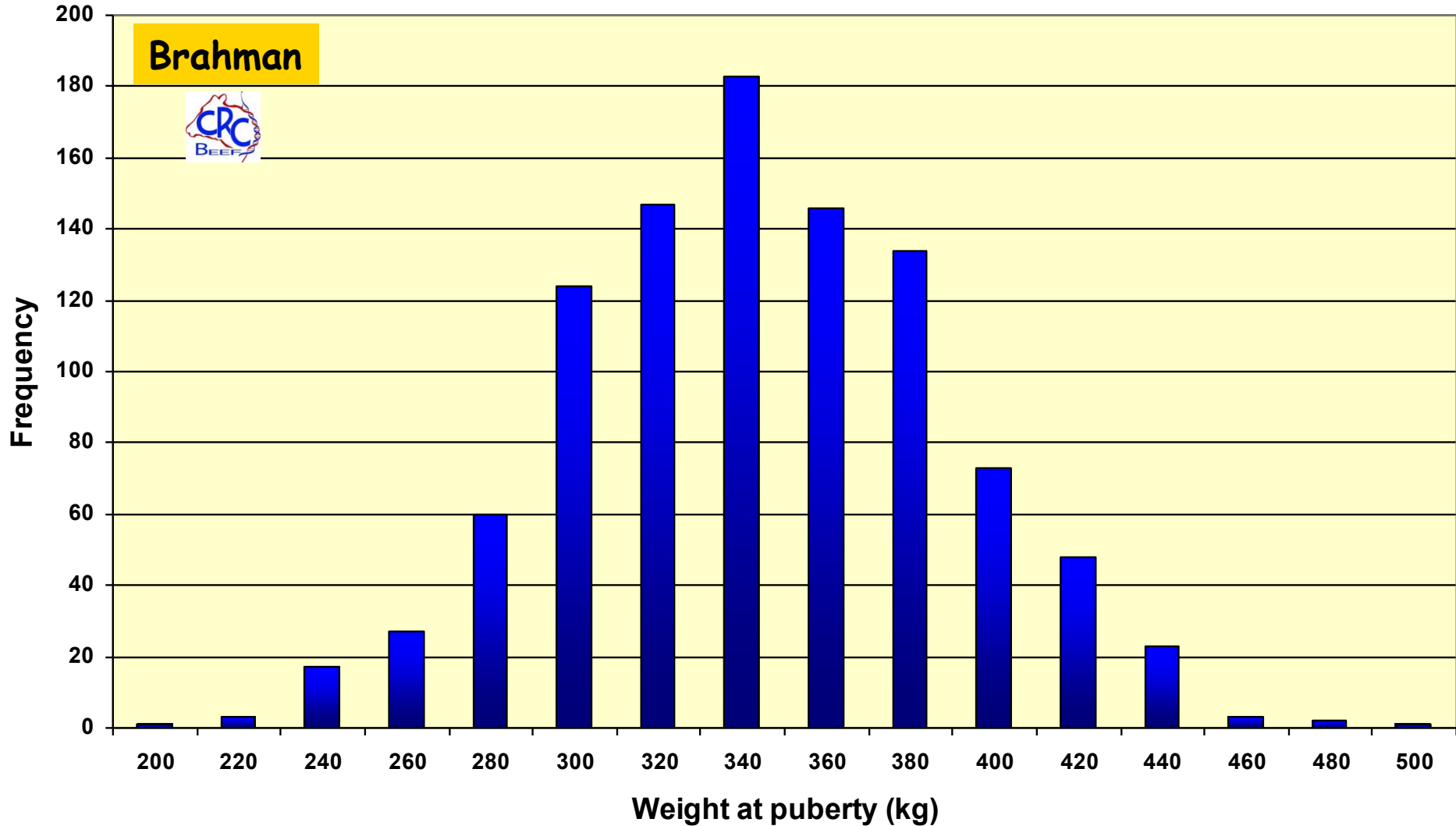
17 months

26 months

35 months

Distribution of weight at puberty

Brahman





Brahman sires

heifer
age
at
puberty
EBVs
(days)

$h^2=0.57$

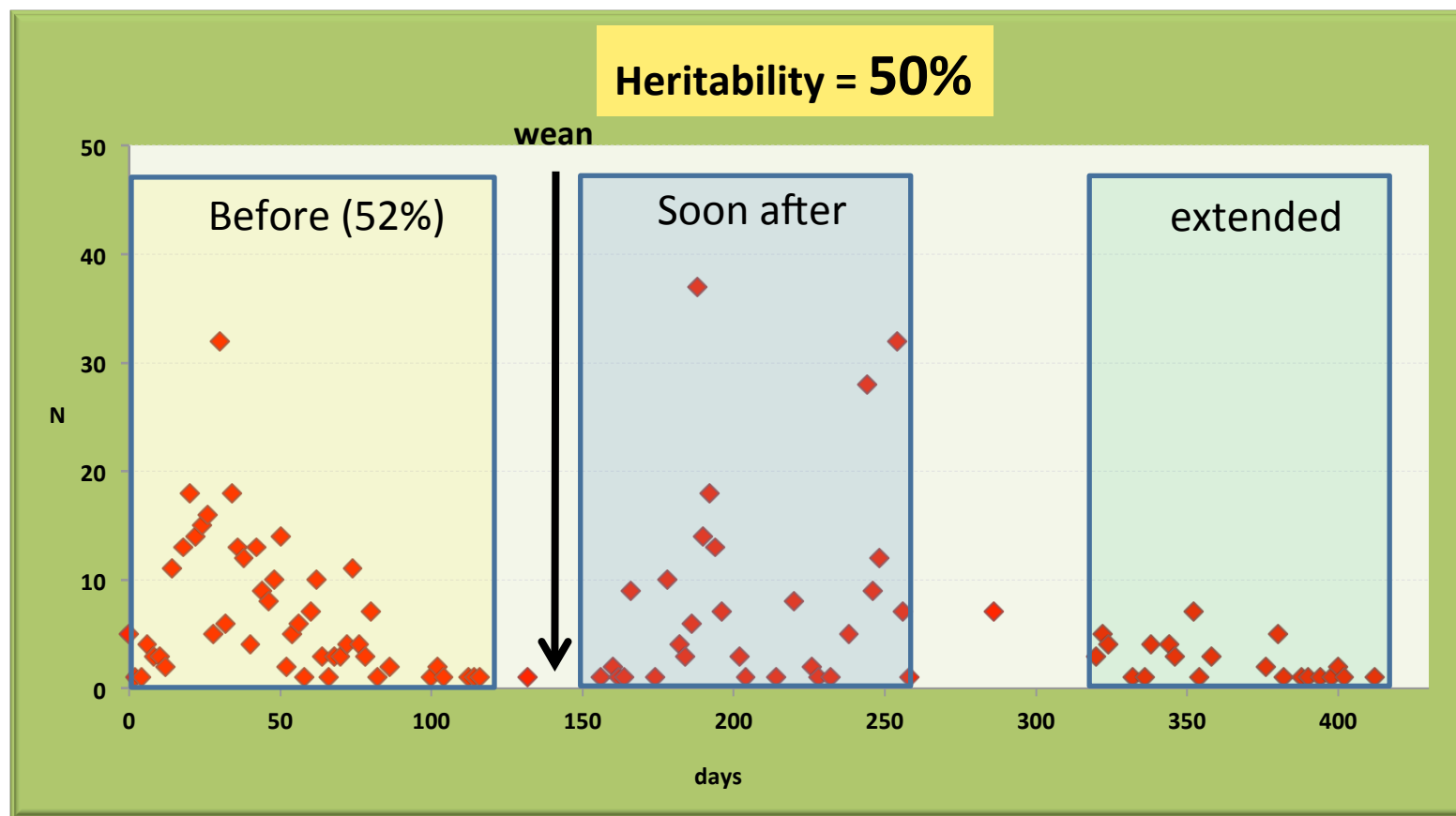
BELMONT 510/97	-185
LANCEFIELD 4999M	-148
BELMONT 268/97	-145
BELMONT 79/96	-143
LANCEFIELD DESTINY	-139
TARTRUS ABEL MANSO	-99
NEWCASTLE WATERS TOBY	-89
CONA CREEK 2652	-85
LANCEFIELD 4461	-83
WAVERLEY QUARTZ DE MANSO	-82
.	.
.	.
TARTRUS CRUZ MANSO	47
LANCEFIELD AMBITION	56
JDH MANGUM MANSO	68
TARTRUS 3292	68
CARINYA MAX	69
ALLAWAH M119	75
ALLAWAH M90	89
CONA CREEK EQ773	137
ALLAWAH M137	145
CONA CREEK 3062	154

5.6
month
difference
daughter's
age
at
puberty



impact on maiden calving rate, many not pubertal at 1st mating

Wet 1st calf cow resumption of cycling



48 % wet 1st calf BRAH cows resumed cycling after calf weaned

Calving rate: wets **41%** (range 28-63%) vs dries **81%** (80-85%)



**lactation
anoestrus
interval
EBV**
(days)

(Wet 1st calf cow)

LANCEFIELD 4999M	-3.3
MR V8 797/3	-3.1
TARTRUS 3886	-2.9
CONA CREEK 2722	-2.3
NEWCASTLE WATERS TOBY	-2.1
LANCEFIELD 4461	-2.0
McKELLAR RICARDO	-1.9
TARTRUS ABEL MANSO	-1.8
.	.
.	.
TARTRUS 2415	+1.9
TARTRUS 3292	+2.0
JDH DENVER DE MANSO	+2.1
LANCEFIELD AMBITION	+2.1
LYNDHURST 1660/7	+2.4
WAVERLEY SUPREME DE MANSO	+2.6
TARTRUS MR MANSO 025	+3.8
BELMONT 79/96	+5.6

4.4
month
difference
in time
1st calf
daughters
to
resume
cycling



BIN Female Measurements

- ☐ **Ovarian Scan at 600 day weight and again prior to joining**
- ☐ **P8 and weight at these scans**
- ☐ **Pregnancy scan mid mating and 4 weeks after bulls for accurate aging of the foetus.**
- ☐ **Cows will be re-mated to gather information PPI1**



Results So Far



Round 1 Heifers Scanned at 750 days



Origin	No	Wt	P8	% CL
Belmont	51	371	4.8	55%
Banana	101	390	4.6	64%
Barranga	95	362	4.1	48%

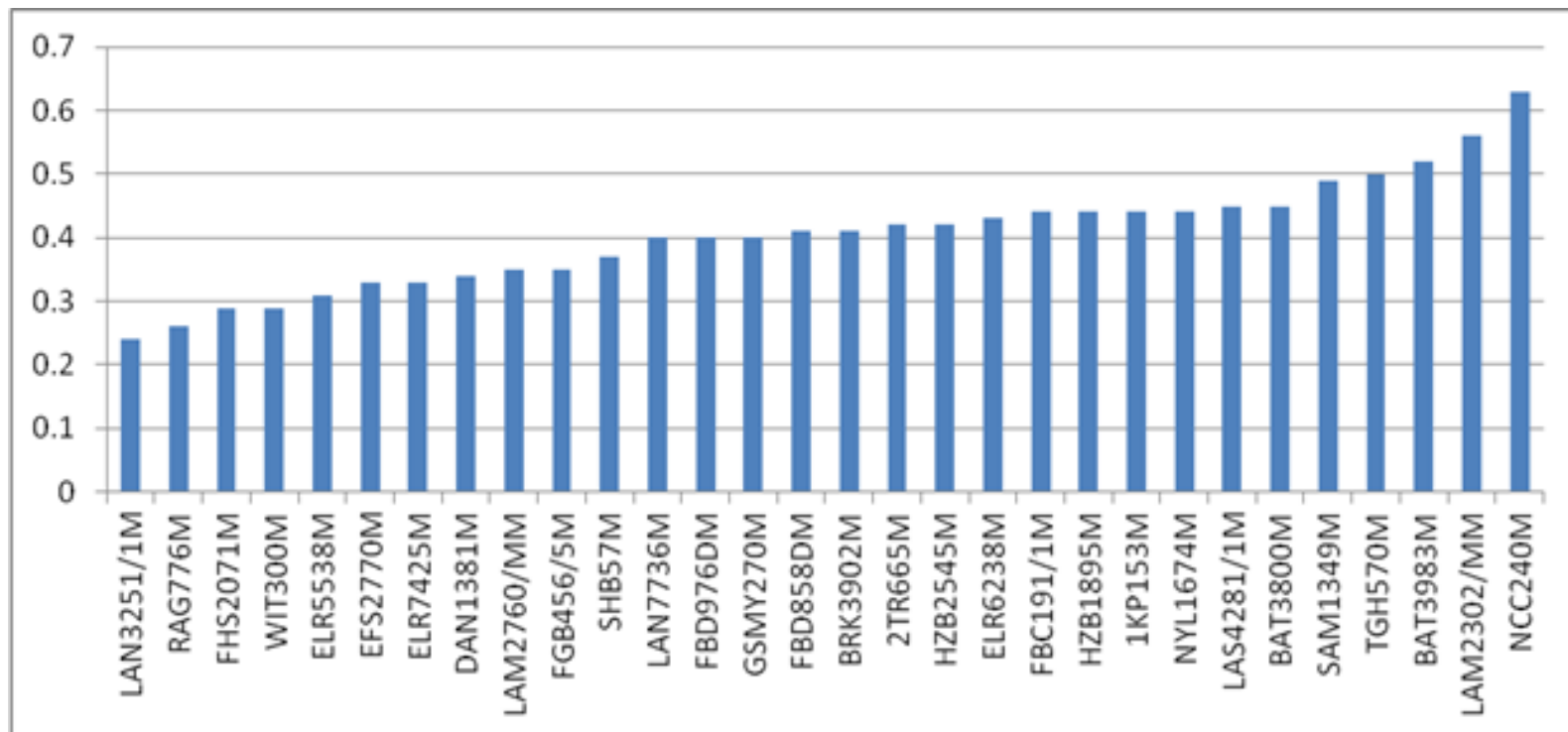
Round 2 Heifers Scanned at 600 days



Origin	No	Wt	P8	% CL
Belmont	53	329	3.7	13%
Banana	77	345	4.1	35%
Barranga	132	327	3	16%



Adjusted sire means for presence of a CL for sires with 10 or more daughters

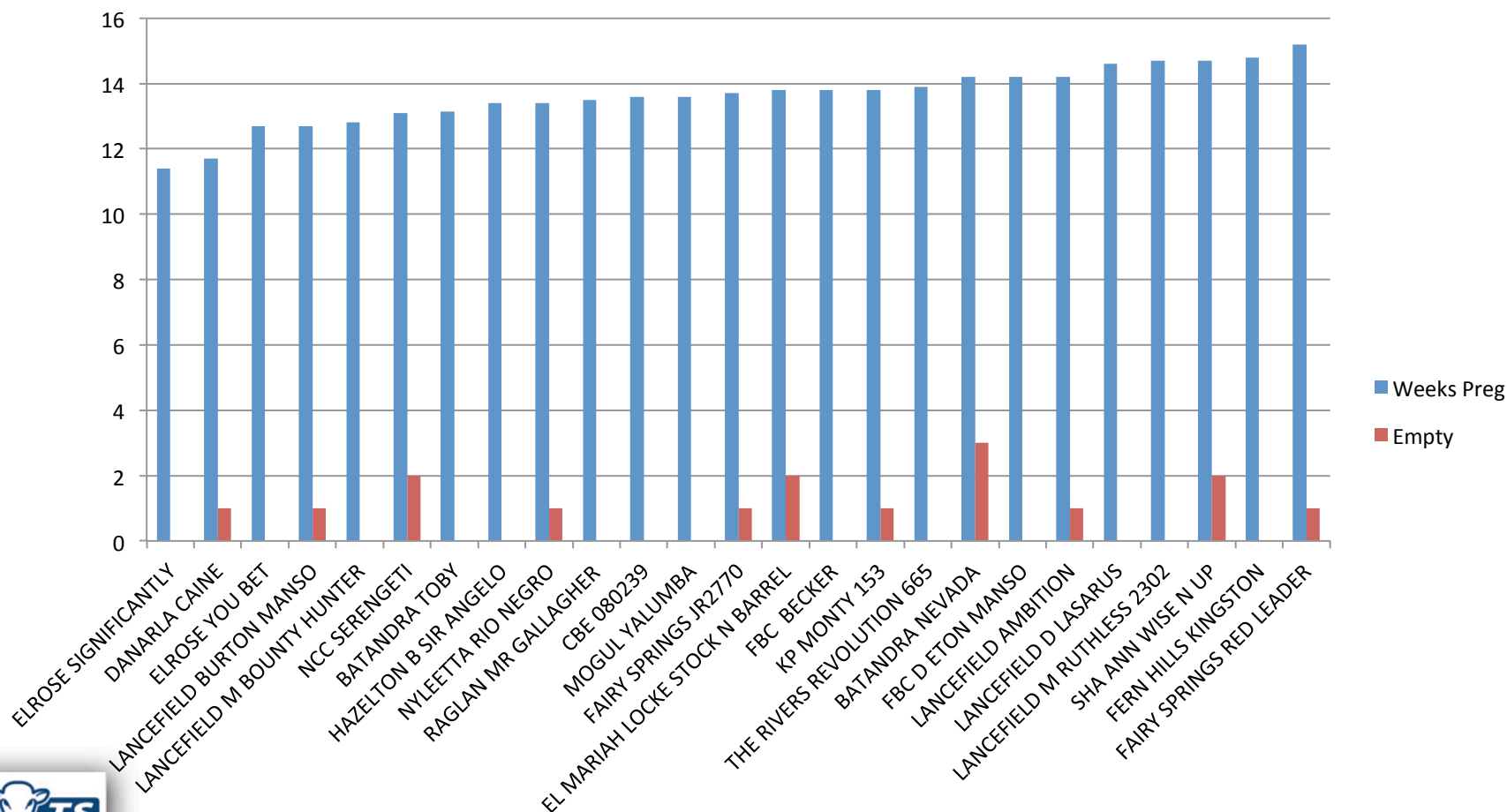


Round 1 Pregnancy Results

location	Wt	P8
Belmont	422	9.0
Banana	440	8.0
Barranga	428	8.8

- ❑ **94% pregnant after 12 weeks of mating both locations**
- ❑ **75% pregnant in first 6 weeks at both locations**

Average Weeks Pregnant of Daughters



What's Next

- **Results from the rebreed on these female under lactation.**
- **Scan for Pregnancy or CL**



Questions??

